

## ▶ DL234 Ethernet and T1/E1 Fiber Transceiver

### DESCRIPTION

Radiant introduces a unique product to combine Legacy T1/E1 traffic with 10/100 Ethernet.

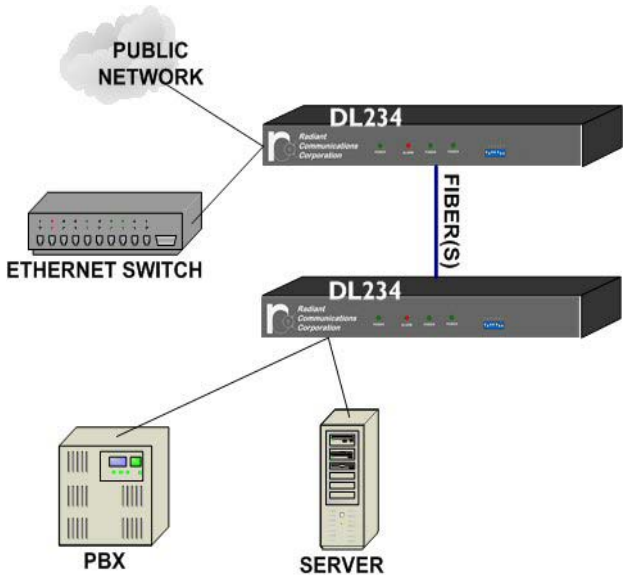
The DL234 series can transport up to four channels of T1/E1 plus one 10/100 Ethernet over the same fiber(s). Transmit distances over 100 km are available. There are versions for two fiber transmission, single fiber, CWDM and DWDM. The DL234 Series is a very cost effective method to upgrade from T1/E1 to 10/100

### BENEFITS

- ▶ Transmit up to four T1/E1 circuits and 10/100 Ethernet over fiber
- ▶ One or two fiber transmission
- ▶ Transmission distances of 100 km or more

### FEATURES

- ▶ Combines Legacy T1/E1 systems with Ethernet LAN traffic
- ▶ Option for SNMP management
- ▶ Options for CWDM and DWDM Systems (ITU Grid)



**Radiant  
Communications  
Corporation**

Phone: 908 757 7444  
Fax: 908 757 8666  
E-mail: [sales@rccfiber.com](mailto:sales@rccfiber.com)  
[www.rccfiber.com](http://www.rccfiber.com)

P.O. Box 867  
South Plainfield  
NJ 07080  
USA

6/2005

# DL234 Ethernet and T1/E1 Fiber Transceiver

## SPECIFICATIONS

### T1/E1

Channels: 4  
 Data Rate: 1.544 Mbps (T1); 2.048 Mbps (E1)  
 BERT: 1 in 10<sup>-10</sup> or better  
 Connectors: RJ45

### Ethernet

Channels: 1  
 Standard: IEEE 802.3  
 Data Rate: 10/100 Mbps  
 Connector: RJ45

### Optical

Wavelength: 850 nm, 1310 nm, 1550 nm, CWDM, DWDM  
 Number of Fibers: 1 or 2  
 Power Budget: see table below

### General Characteristics

Power: 15W @ 90 to 240V AC  
 Operating Temp: 0° to 40° C  
 Storage Temp: -20° to 65° C  
 Size: 17.0" W x 13.0" D x 1.75" H

## OPTICAL POWER BUDGET

FIBER	WAVELENGTH	OPTICAL BUDGET	DISTANCE
MULTIMODE	850 nm	10 db	2 km
SINGLEMODE	1310 nm	10 db	30 km
SINGLEMODE	1310/1550 nm (single fiber)	10 db	30 km
SINGLEMODE	CWDM	Contact factory	
SINGLEMODE	DWDM ITU Grid	Contact factory	

Contact Factory for higher optical budgets and distances

## ORDERING INFORMATION

PART NUMBER	DESCRIPTION
DL234/MM-UX8	Transceiver 10/100 + T1, 850 nm, 2 fibers
DL234/SM-UX3	Transceiver 10/100 + T1, 1310 nm, 2 fibers
DL234A/SM-UX3 DL234A/SM-UX5	System of Transceivers 10/100 + T1, 1310/1550 nm, single fiber
DL234B/MM-UX8	Transceiver 10/100 + Four T1, 850 nm, 2 fibers
DL234B/SM-UX3	Transceiver 10/100 + Four T1, 1310 nm, 2 fibers
DL234BA/SM-UX3 DL234BA/SM-UX5	System of Transceivers 10/100 + Four T1, 1310/1550 nm, single fiber

### Note:

- Specify X—connector type: A—SC/APC, E—SC, B—FC, Z—FC/APC
- For E1 operation contact factory
- Add -SNMP to the part number for SNMP management
- For E1 versions
- For Special requirements contact factory; Longer distances, CWDM and DWDM versions, etc.



**Radiant  
 Communications  
 Corporation**

Phone: 908 757 7444  
 Fax: 908 757 8666  
 E-mail: sales@rccfiber.com  
 www.rccfiber.com

P.O. Box 867  
 South Plainfield  
 NJ 07080  
 USA

6/2005